

## Premium Preparation 1200 mm Vegetables Processing Table with Upstand

ITEM # \_\_\_\_\_

MODEL # \_\_\_\_\_

NAME # \_\_\_\_\_

SIS # \_\_\_\_\_

AIA # \_\_\_\_\_



133068 (TLV1210PN)

Vegetables Processing/  
Washing Table with  
polythene cutting board, 1  
bowl, scraping hole and  
upstand, 1200mm

### Short Form Specification

#### Item No.

50mm high worktop in 304 AISI stainless steel, 1,5mm in thickness, sound-deadened, anti-drip edges and welded corners. 1 bowl (684x303x180h mm). Integral radiused rear upstand, h=100mm with 10mm radius. All-round apron. Round section legs and feet in 304 AISI stainless steel, 50mm in diameter. N.I Polythene cutting board and scraping hole on front.

### Main Features

- Sturdiness, stability and reliability of table accurately tested.

### Construction

- 100 mm upstand with 10 mm radiused corner and 13 mm deep, designed to be used against a wall.
- Table can be equipped with a mobile bin with lid for waste disposal (optional accessory).
- Round section legs with feet in 304 AISI stainless steel, 50 mm in diameter, adjustable in height by +0/-40 mm.
- Table can be equipped with a set of castors as an alternative to the feet.
- Delivered in knock-down package.
- Single-pressed bowl AISI 304 stainless steel bowl with overflow pipe and drain hole.
- Wide range of taps are available to suit every need.
- Upstand back completely covered with Stainless Steel welded profile.
- Unit features a 20 mm deep recessed surface, a polythene cutting board and a scraping hole on the front and a bowl.
- Heavy duty construction entirely in AISI 304 stainless steel to offer maximum durability.

### Optional Accessories

- Lower shelf for 1200mm for units PNC 855282 ☐
- Set of 4 wheels (2 with brake) d. 100mm PNC 855288 ☐
- 3-sided underframe for 1200mm tables PNC 855290 ☐
- Elbow operated mixer tap with spout 3/4", single hole PNC 855322 ☐
- Elbow operated mixer tap with short spout 3/4", single hole PNC 855323 ☐
- Foot operated mixer tap (hot and cold) with spout 3/4" PNC 855328 ☐

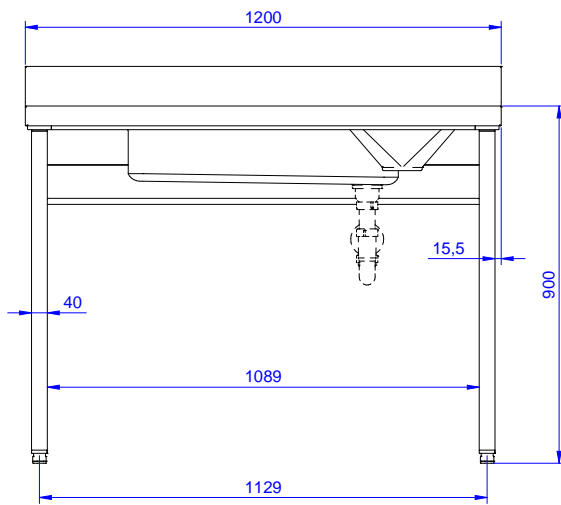
APPROVAL: \_\_\_\_\_



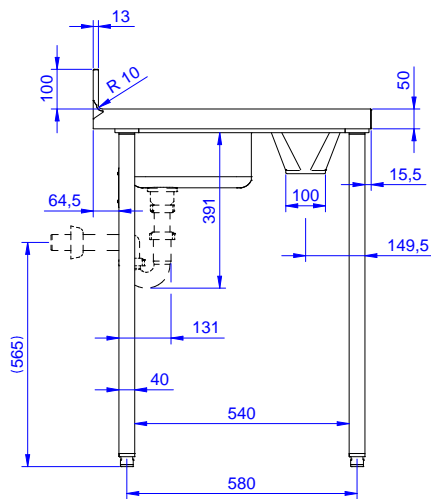
**Electrolux**  
PROFESSIONAL

## Premium Preparation 1200 mm Vegetables Processing Table with Upstand

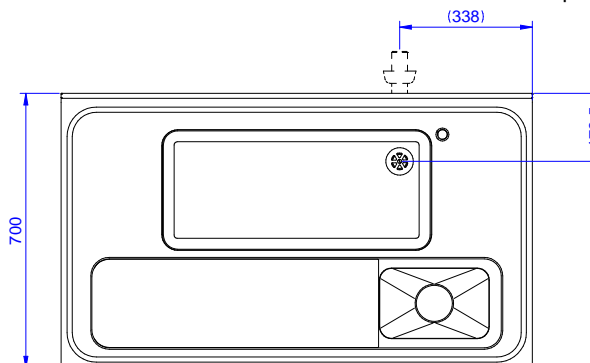
Front



Side



Top



Premium Preparation  
1200 mm Vegetables Processing Table with Upstand

The company reserves the right to make modifications to the products without prior notice. All information correct at time of printing.

2025.06.30



**Electrolux**  
PROFESSIONAL

## Premium Preparation 1200 mm Vegetables Processing Table with Upstand

### Key Information:

External dimensions,  
Width:

133068 (TLV1210PN) 1200 mm

External dimensions,  
Depth:

700 mm

External dimensions,  
Height:

1000 mm

Upstand Dimensions,  
Height:

100 mm

Upstand Dimensions,  
Depth:

13 mm

Upstand Dimensions,  
Radius:

R=10

Worktop thickness:

50 mm

Net weight:

40 kg



Premium Preparation  
1200 mm Vegetables Processing Table with Upstand

The company reserves the right to make modifications to the products without prior notice. All information correct at time of printing.

2025.06.30